

GUNGAHLIN SMOKE SIGNALS

GUNSMOKE



In this edition:

From the President	2
Walk or cycle to school	3
Amaroo school's ASTEC program	5
Gungahlin Festival	7
Tour de Gungahlin #5	9
Gungahlin Bus Services.....	11
Mulligans Flat	12
Hall School Museum	13

We want to hear from all residents and workers of Gungahlin what you would like to see in your quarterly magazine. We are looking to revamp and revitalise this publication, and to make it more interesting and relevant. We want you to pick it up when you see the new edition at the shops, or follow it online.

We have started a series looking at **Gungahlin schools** and some of the innovative ideas they are busy working on. We continue our **Tour de Gungahlin**, highlighting some of the exceptional walking and cycling tracks in our region. While we will continue to bring you relevant updates from the ACT Government, you may notice a **reduction in political content**, especially when it doesn't relate to Gungahlin.

If you have content you would like to see in next edition, **please tell us!** It could be an idea you would like someone to pursue, a letter to the editor, or you may want to write an entire article yourself.

Email the editor at gunsmoke@gcc.asn.au

David Pollard, Editor



President: Peter Elford - president@gcc.asn.au

Vice President: Henley Samuel - vicepresident@gcc.asn.au

Secretary: Andrew Braddock - secretary@gcc.asn.au

Treasurer: David Pollard - treasurer@gcc.asn.au

GCC Committee: Kevin Cox, Prasad Tipirneni, John Phippen, Scott Hooper, Shanthi Reddy

Gungahlin Community Council meetings are held on the second Wednesday of each month, at 6:30pm at Gungahlin Library. When possible, meetings are streamed live via Facebook.

web: www.gcc.asn.au facebook: www.facebook.com/gungahlin email: info@gcc.asn.au

From the President

PETER ELFORD

It's impossible not to notice the huge amount of **development** that's underway in Gungahlin at the moment. Every time we head out in our cars there are road duplications or intersection upgrades at every turn, the residential towers are well and truly out of the ground at the western edge of the town centre, and the new suburbs of Moncrief, Throsby, and Taylor are a blur of dozers, developers and dwellings. Many of these projects, particularly the road upgrades and light rail construction, will take many months to complete, so residents are facing a frustrating year or more where things will be "worse before they get better".

“ As Gungahlin rapidly approaches 70,000 residents, it's hardly surprising that it's not just our roads that are straining. ”

The GCC has been focussed in the past months on the **town centre planning refresh** initiated in response to concerns raised last year about the processes leading to the cluster of residential towers approved/proposed for the town centre (Gunsmoke newsletters #143, #144). The GCC has promoted and supported the refresh surveys, consultations (including Planning in the Pub!) and feedback gathering being undertaken by the ACT's Environment Planning and Sustainable Development Directorate (EPSDD). Many of the GCC executive also attended a small workshop facilitated by the ESPDD team which provided a further opportunity to develop some ideas and thinking about how planning for the Gungahlin town centre can better address building height and character, public spaces, walking, cycling and road transport. This was well run by ESPDD and the GCC would like to thank the many staff from ESPDD that support the workshop on a Thursday

evening. We expect to see the results of the refresh in the coming months.

The GCC is encouraged by the development of the **Gungahlin Town Centre East**, opening up the land for apartment complexes, community facilities, office and retail on the vacant land east of the major hub (east of Hinder Street), and finalising the road infrastructure serving the town centre.

The real action in the town centre is the **light rail construction**, which has involved the closing of Hibberston Street and the transformation of Flemington Road with rails starting to go down in several of the intersections. This is certainly a trying time for retailers, with the erection of construction barriers and radically changed traffic flows. The GCC encourages shoppers to support our local businesses so they are still here when the construction is over and we can all benefit from what will be a transformed town centre in the next 18 months, with the Light Rail, new bus interchange and cinema all likely to be in place. In the meantime, residents are encouraged to track road closures and changes by checking on the GCC Facebook page.

The GCC also looks forward to an update from Senator Zed Seselja on the Federal election commitment to relocate a small-medium **government agency** to the Gungahlin town centre, as this is sorely needed to improve the balance of employment across Canberra's town centres.

As Gungahlin rapidly approaches 70,000 residents, it's hardly surprising that it's not just our roads that are straining. **Schools** in the region are bulging, with public school enrolments in the north of Canberra growing by about 53 per cent over the last five years. The GCC therefore welcomed another pre-budget announcement of a \$24M investment to expand the capacity of the Harrison, Gold Creek, Neville Bonner Primary and Palmerston District Primary Schools. The scope of the new proposed North Gungahlin school will be expanded to include a community use oval which is due to open at the start of 2019, and the Government is also exploring options for a new school in East Gungahlin.

Ride or walk to school

PHYSICAL ACTIVITY FOUNDATION

Ride or Walk to School Program for primary schools

Since 2013, the Ride or Walk to School program has been helping Canberra primary school students develop skills, confidence and healthy habits for life.

The good news is Ride or Walk to School, is expanding and we'd love your school to join the team!

The Ride or Walk to School is run by the Physical Activity Foundation, with funding and support from ACT Health. The program is provided at no cost to schools and is designed to drive culture change within the school community around riding and walking to school. The program contributes to the

ACT Government's Healthy Weight Initiative, encouraging students to be more active, and also assists in reducing traffic congestion around schools.

The program includes:

- Access to biking equipment to run the Australian Curriculum aligned Safe Cycle program for students
- Teacher training
- Resources and support to run four walking and riding events in your school each year
- Personalised walking and riding maps
- Bike maintenance workshops
- Community engagement campaigns
- Support from a dedicated program manager and more!

For more information or to register your school's interest for either program
email: info@paf.org.au phone: 6162 2820 visit: PAF.org.au



It's your move - safe cycle

PHYSICAL ACTIVITY FOUNDATION

It's Your Move – Safe Cycle for High Schools

It's Your Move supports schools to create environments that encourage students to ride, walk and scoot to school. Safe Cycle for High Schools is a new resource that offers fun, interactive curriculum for Years 7-10 to build cycling skills and confidence.

Safe Cycle provides a quality resource to:

- educate students in safe cycling techniques and bike maintenance
- increase students confidence and enjoyment of riding a bike as a form of active travel
- build on the existing primary school initiative, Ride or Walk to School
- link to and support the Australian Curriculum (Health and Physical Education)

Schools receive:

- Online teacher professional learning.
- Online game-based student learning and fun practical lessons.
- Loan of a bike package for 3 weeks, managed by the Physical Activity Foundation.
- Bike maintenance workshops.
- Support to implement a whole school QR code tagging system to encourage more students to ride or walk to school.

We are currently recruiting ACT High Schools to participate in the Safe Cycle program.



IT'S
your move
— SAFE CYCLE



Physical Activity
Foundation

Amaroo School

AMAROO SCHOOL TECHNICAL EXPERIENCE CREW

Amaroo School's ASTEC (Amaroo School Technical Experience Crew) program is an amazing example of how motivated and empowered students can help to bring about change and make a difference in the school at the same time.

Who are the ASTECs?

The ASTECs are a group of Year 9 and 10 students at Amaroo School (a few of whom are featured in our recent Digital Schools [video](#)). With the support of a couple of key teachers, the students have planned and developed the ASTEC concept over time, and now provide tech support and advice for teachers, students and parents in the school.

This comes in various forms. Students and teachers can request support through a simple support form, or they can attend 'drop-in' sessions in the school's Inspire Centre. The ASTECs also run regular 'Techy Brekki' sessions, where students, parents and teachers can attend and get advice, tips and support on a range of ICT matters. This program is now so successful that it is now a fully-fledged subject linked to the Australian Curriculum. Students enrolled in the ASTEC program are even working towards Google Certified accreditation, something that is even a long way off for many teachers.

The ASTECs are an integral part of the ICT support system at Amaroo School. Staff talk about an incident early last year where 200 newly purchased Chromebooks were just 'not working'. Through the collaborative efforts of the ASTECs, they solved the problem and got all of the Chromebooks up and running again.

But it's not only the teachers, students and parents that benefit from the program. The ASTECs are learning a range of real-world skills like problem solving, collaboration and organisation. They're also developing ICT skills that may give them the edge over their peers professionally; earning industry-level experience as well as 'extra credit' in their academic transcripts.

“ Students enrolled in the ASTEC program are even working toward Google Certified accreditation ”

How did the ASTEC program start?

In 2014, students at Amaroo School were unhappy about how the technology was working for them. They decided to take action. As a part of a statistics assignment, they measured, recorded and analysed average log-in times across the school, and then presented their findings to the ACT Education Directorate. This in turn contributed to the consultation process around new technology directions with improvements around WiFi, computers and online platforms. Including a student perspective has contributed to the success of these changes, and Amaroo School now has ICT infrastructure and services that are among the best in education.

This meant that the students could focus their attention on more positive uses of technology. With the support and guidance of their teachers, they developed the ASTEC model. This gave them the opportunity to understand all aspects of the problem and come up with a creative solution.

Other opportunities available at Amaroo School include STEM (Science, Technology, Engineering, Maths) electives and coding clubs. Offering students real-world experience empowers them and opens up a whole new world of learning.



TOWARDS TECHNOLOGY TOGETHER



Communities@Work

CELEBRATE GUNG AHLIN *festival*

April ended with Celebrate Gungahlin taking place in our Town Park again this year. The festival was a huge success, with attendees enjoying great food, brilliant entertainment, and all the best Gungahlin has to offer.

Paul House, an elder of the Ngunnawal people, welcomed the crowd to country with a performance on his didgeridoo, and the Town Crier, Lord Joe, was on hand to draw their attention to the wonderful talents on display on the festival stage.

The stage was alive all day with performances from music and dance groups, and even a snippet from Dramatic Productions' show, Sweeny Todd, which opens later this year.

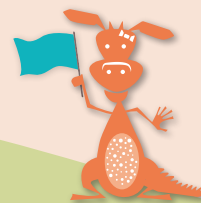
94 stalls showed off community services and products from the region, and the children's area was buzzing all day with smiles and laughs aplenty.

Celebrate Gungahlin has lived up to its name once again, demonstrating just how much there is to love about living in Canberra's north.

The community owes a debt of gratitude to the sponsors for their support and to the organising committee for putting together such a fantastic event. The committee was comprised of representatives from Communities@Work, Gungahlin Community Council, Marketplace Gungahlin and My Gungahlin, and it couldn't have happened without them.



RozArt - winner of best stall competition



Celebrate Gungahlin Committee Members:
Communities@Work, Gungahlin Community Council,
JM Publishing, The Marketplace Gungahlin
and My Gungahlin

..... Celebrate Gungahlin

Media Supporters

Canberra Weekly



Gungahlin talent on display



Crowds enjoying the stalls



Fun for the whole family

Champion Supporters



Communities@Work

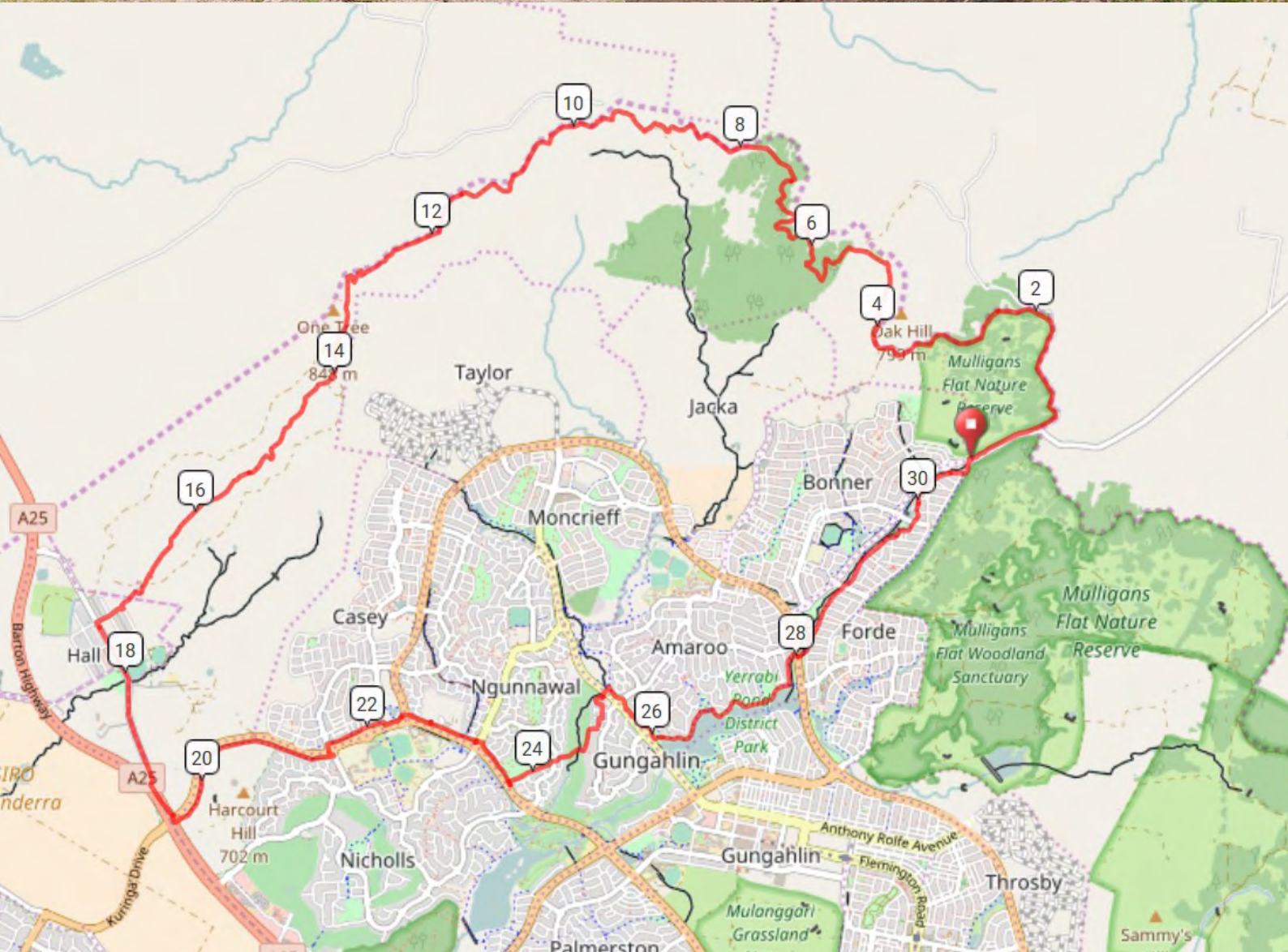


Hero Supporters



Supporters





Tour de Gungahlin #5

PETER ELFORD

To celebrate the centenary of the ACT, the ACT government established the Centenary Trail, a 145km loop for walkers and riders around the ACT. Gungahlin is fortunate to be surrounded by some of the best parts of the trail, and ride #3 (Gunsmoke 142) featured a portion of it as part of the Mulligans Flat ride.

This issue describes the longest and toughest ride so far in the series, based on the northern section of the Centenary Trail from Bonner to Hall. This is a MUCH longer (over 30km) and MUCH more difficult ride than any of the previous rides described in Gunsmoke. About 15km of the ride shown on the map is on mountain bike “single track”, a narrow trail less than half the width of a fire trail with sharp corners and lots of ups and downs, so you can only do this ride on a mountain bike. There are sections that are VERY steep and you might need to walk. Make sure you have plenty of water, and it would be very unwise to do this ride alone if you are not experienced. You also have to lift your bike over/through some gates. All that said, if you are a mountain bike rider, and want a cross-country alternative to Canberra’s mountain bike parks – this is a MUST.

I have suggested a starting point at the northeast corner of Bonner, where there is a small car park, and doing the route anti-clockwise. Follow the Centenary Trail signs that take you parallel to Mulligans Flat road and then onto a rough fire trail along the ACT/NSW border heading north. This section up to Oak Hill is hard work (it’s a 100m vertical climb) and you may need to push in places. The single track starts about 3.5km from the start and is a feature of the final climb to just below the communications tower on top of the hill where the view south is amazing. Have a rest at the sign before starting the ride down to the Northern border campsite, which is pretty steep and windy.

Beyond the campsite, the single track winds through some really pleasant native forest for several kilometres. Just as you approach the 6km mark watch out for the piles of rocks that previous visitors have piled up. Eventually the forest gives

way to grasslands and you cross a couple of small valleys on the way to One Tree Hill, which looms up in front of you as you approach. The climb up one tree hill is a series of impressive switchbacks which takes you nearly 80m up in just a kilometre of riding. If you are not too tired at the top, keep an eye out for the walking-only track on your right which takes you up to the lookout on top (highly recommended). The commemorative arch and some more impressive views make this a great photo opportunity.

“ If you are a mountain bike rider, and want a cross-country alternative to Canberra’s mountain bike parks – this is a MUST. ”

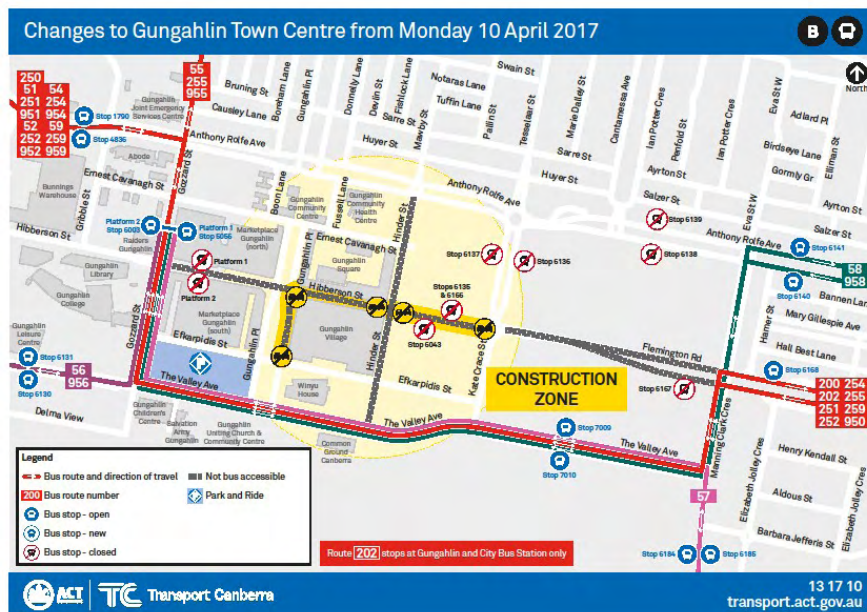
And now the fun begins! The single track down to Hall is almost downhill all the way – a drop of 160m in 4km and it’s a blast (watch out for riders and walkers coming up the hill). When you get to Hall there are a couple of café’s where you can get a coffee before heading out of the village. Follow the Centenary trail markers as far as Clarrie Hermes Drive, where you can turn left and use the bike path network in Gungahlin to ride back to Bonner. This cuts across in front of Casey, up through Ngunnawal, across the golf course (watch out for golfers and golf balls), past Yerrabi pond and along the Forde valley.

Online maps for all the rides described in the Tour de Gungahlin can be found at

<http://www.gcc.asn.au/news/tour-de-gungahlin>

Bus Services in Gungahlin

TRANSPORT CANBERRA AND CITY SERVICES



Stage 1 Light rail construction works are moving full steam ahead in the centre of Gungahlin, along Flemington Road and Northbourne Avenue. This is an exciting time for public transport in Canberra that will see the delivery of the first stage of light rail.

For Gungahlin in particular, this will result in a new Gungahlin public transport interchange, with the bus component due for completion in early 2018 and light rail services due to commence later in 2018. This will see buses running through Gungahlin Place to the new bus platforms in Gungahlin Place north, allowing for connections to the Light Rail terminus in Hibberson Street.

To allow for these works bus services are currently diverting along The Valley Avenue and along Gozzard Street. The Gungahlin Bus Station platforms have relocated from Hibberson St to Gozzard St, just outside the Raiders Club. These changes will remain while construction activities are ongoing in Gungahlin Place.

Transport Canberra would like to thank Gungahlin residents for their patience during the construction phase as we see temporary bus diversions and stop changes to allow for these works to occur.

Works are scheduled to cause the least amount of disruption possible to residents however some bus services are running slightly later than timetabled due to these works and we encourage our customers to please allow extra time to travel.

Throughout the construction period there will continue to be a range of temporary diversions and works that may affect your bus service. We encourage you to stay up to date with changes in the area by following Transport Canberra on Facebook or Twitter, by signing up to our weekly email alert (accessible from the Transport Canberra website) and to also take note of all passenger signage in the area. This includes any changes to school services.

A new Black Rapid bus service will be introduced in late 2017 which will connect Gungahlin residents to Belconnen, every 15 minutes or better, Monday to Friday. For the first two months of service, passengers will be able to ride the Black Rapid for free.

Further information including detailed maps can be found at transport.act.gov.au or by calling 13 17 10.

Mulligans Flat

ELSIE PERCIVAL

Workshops/focus groups to develop the learning centre

We are currently in the process of planning our Sanctuary gateway – a space to engage with our native woodlands, wildlife, and conservation. This exciting space will be located on the edge of the new Suburb of Throsby, and will be a significant asset for the Gungahlin community. To make sure this is a space that locals want to be a part of, we have been running focus groups. If you would like to go over the concept plan with us, please get in touch. We have a copy to view at the Forde Community Centre.



Coming soon *Woodlands Learning Centre*



Planting day at Gorooyarroo

In an effort to regenerate habitat for native wildlife, like the endangered Superb Parrot and soon-to-be resident bettongs, quolls and curlews, we recently held two planting days at Gorooyarroo Nature Reserve. Dedicated volunteers spent the morning gracing eroded soil with baby plants native to Box-gum Grassy Woodlands, and watched as a sea of pink plant guards speckled the landscape.

This combined effort will help this endangered ecosystem flourish into the future. Thank you to all involved!

Science in the Sanctuary

The restoration of Mulligans Flat's ecosystems and reintroductions of locally extinct species would not be possible without quality science.

How do we bring back Eastern Quolls to mainland Australia? How can we remove rabbits across 485 hectares of woodlands? These are just some of the questions asked, and tested, before embarking on successful conservation projects at Mulligans Flat.

To share these scientific stories with the community, we will be hosting 'Science in the Sanctuary' at the Forde Community Centre on Thursday the 6 of July. We invite everyone to come along and chat to researchers, staff and volunteers



at the Australian National University, Woodlands and Wetlands Trust and Parks and Conservation service who are working to say #notoextinction every day.

Hall School Museum

PHIL ROBSON

It has been a very busy time at the Museum over the last 3 months. The Museum volunteers have been working on a number of projects and by the



end of June we hope things will have quietened down! Some of the volunteers have already gone away for a well deserved winter break.

University of Canberra

The one day workshop at the Museum on 5 April was a great success with 35 first year Museum and Conservation Studies students from the University of Canberra attending with their Course Convenors Alison and Mona. The students were given a full tour of the Museum including a sneak preview of the new exhibitions followed by a full day of working with objects chosen from the Memory Lane Collection. Both the students and the volunteer guides were extremely pleased with the outcomes of the day and again our connection with the University of Canberra has proved fruitful to both of our institutions.

Visitors

It has been the start of visiting season with a number of groups coming to the Museum. We have had the Yass & District Historical Society, the Model A Ford Car Club and nearly 100 year 2 pupils with their teachers from Gold Creek School. Due to the number this visit had to be run over 2 days and proved very tiring for the volunteers who were on hand to explain to the students all the various old items on display and their uses. Further large primary school visits are on the calendar in the coming months.

The 'Stones that Speak' exhibition was promoted on their website and fliers as an exhibition to be visited as part of Australian Archaeology Week.

The Canberra Archaeological Society in a joint venture with the Museum also opened this exhibition to its members on 4 June.

Descendants of local families regularly visit, Sue & Kevin McIntosh from the Majura area visited and spoke to the museum team about the many years research they had been gathering to put into a book, a copy of which was presented to the Museum for its resource library.

Helen & Marion Warman who are descendants of the Hatch family have also visited on a couple of occasions with photos and items that we have been able to copy for our records particularly relating to the Hatch and Lazarus families.

Volunteers

The Museum is looking for recruits to join the dedicated band of active volunteers who come along each Thursday morning to work on the collection. You will be trained in all the aspects of the museum's activities including being volunteer guide, researching so you will get to know the local history plus many other interesting tasks and also enjoy the pleasant social interaction with a wonderful group. If you would like to join us please contact me at hallmuseum@bigpond.com or phone 0408259946.

'Stones that Speak' and 'Old Days- Old Ways'

These were the two new exhibitions staged by the Museum for this year's heritage festival on 29 and 30 April.. These exhibitions were supplemented with a display of blacksmithing by Kingsley and Alf, a display of old vehicles by Peter Toet, a new Hall Village resident, a felting display and the antiques, collectables and an art appraisal table with experts Andrew Whitehead and Ken Laughlin.

The Minister for Heritage, Mick Gentleman formally opened the exhibitions with a positive comments about the exhibitions and the Hall Museum with a further address by Gary Shipp, the indigenous representative from the ACT Heritage Council who were given a preview with a presentation by Ken Heffernan about the important 'Stones that Speak' display.



These were smaller but specialized exhibitions that were staged this year particularly the indigenous stone tools and artefacts collected by Lyall Gillespie. The number of visitors was less than in previous years. However, a lot of interest was shown in this display and thanks to Ken with his assistants Eleanor and Nicola, explanations of the items and their uses provided the visitors with a wealth of information regarding the history and

Canberra & Region Heritage Festival

The Hall Museum's contribution to the 2017 Canberra & Region Heritage Festival began with a stall at the Gungahlin Homestead Open Day staged by the ACT Branch of the National Trust. Approximately 3000 visitors came to the homestead on the day and many visited our stall and were given promotional leaflets of the Museum and our forthcoming exhibitions. Also sales of hand made products by Heather Wilford, Joan Christie and Cheryl May also proved very popular and the funds raised have increased the museum's treasury!



Mulligans Flat

Photo of the month

Dedicated photographer and birdwatcher, Julie Clark, recently snapped pictures of our reintroduced Bush Stone-curlews. The individual in this photograph was part of the third group of birds to be brought to the sanctuary after being absent from Canberra for fifty years. She was named 'Sylvie' by a Canberra local, and we are thrilled she has settled into her new home.

Send your photos to commanager@woodlandsandwetlands.org.au

